



Solar Monitoring Solution

DATALOG Solar Monitoring Solution **24 x 7 monitoring with full data logging without human intervention**

Highly Scalable Solution –

- Home ---> Office ---> Factory ---> Solar Farm
- Single Farm / Tube-well ---> Multiple Farms / Tube-wells across the country
- 1 Solar Site ---> 000s of Solar Sites

Flexible Solution –

- Supports Multiple Inverter types
- Suitable for Solar Solution Suppliers – Monitor Any installation, Anywhere
- Customized solutions possible

Advanced Functions –

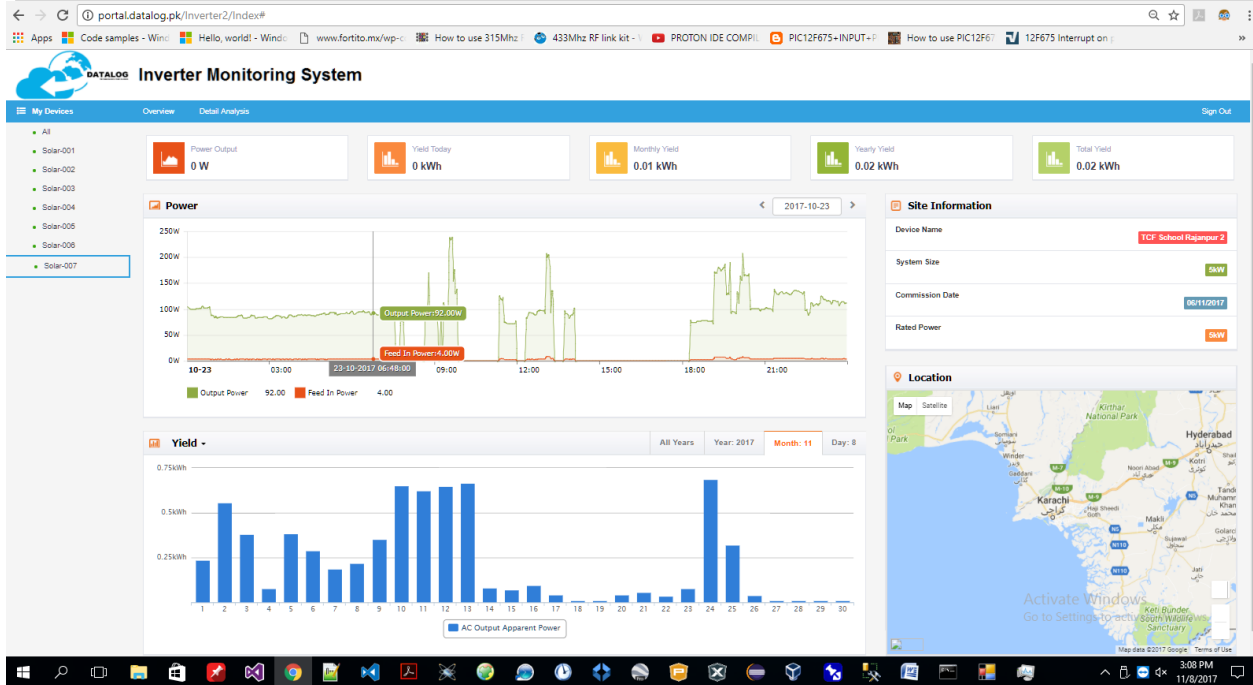
- Monitor Utility - Voltage, KW; Monitor Generator Sets
- Monitor Pumps; Electrical Panels
- Monitor Water Levels in tanks, wells, ponds
- For Solar Farms : Control Solar Panel movement --- Track the Sun!

Latest Technology –

- Stand Alone OR Cloud Based software
- Sensor Data Collection System – Any sensor, Anywhere, Any time
- Integration of Sensor Data with ERP – SAP, Oracle, Dynamics or other ERPs - SaaS to SaaS
- Management Dashboards – DATA Analytics for large volume sensor data

Features

- Uses GPRS communication where no Wi-Fi is available.
- Monitor Inverter output parameters such as :
 - AC output power, AC apparent output
 - Battery Charging Current, Battery Voltage, Grid Voltage
- Display site locations on Google Maps; Graphical reporting of inverter data
- Combine multiple sites on a single dashboard
- Query facility for management to see inverter output for a previous date, month or year
- Start small and grow to 000's of solar sites
- Add water level sensors, pump on/off sensors, utility voltage sensors, etc. for agricultural and other installations
- Handle on-grid and off grid applications simultaneously
- Can include local utility energy rates
- Complete past record available for query, analysis and downloading to ERP systems



User Dashboard for multiple solar sites

Device ID: DEMO103, Sensor Name: Electricity

Electricity: ON

26/10/2016 13:29:00
Reading Date & Time

Details....▼

Device ID: DEMO103, Sensor Name: Electricity

Electricity: OFF

26/10/2016 13:25:00
Reading Date & Time

Details....▼

Device ID: DEMO103, Sensor Name: Voltage Sensor

Voltage: 228 V

26/10/2016 14:49:00
Reading Date & Time

Details....▼

Device ID: DEMO103, Sensor Name: Current Sensor

Current: 7.86 A


26/10/2016 14:49:00
Reading Date & Time

Details....▼



Powerful Low Cost Solutions

Device ID: TH1007, Sensor Name: Temp Sensor1




Temperature: 20

13/10/2016 07:50:00
Reading Date & Time

Details...▼

Device ID: TH1007, Sensor Name: Humidity Sensor 1

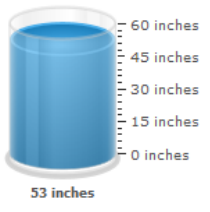


Humidity: 43 %

13/10/2016 07:50:00
Reading Date & Time

Details...▼

Device ID: Wms01, Sensor Name: Overhead Tank Sensor

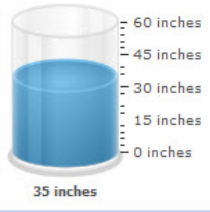


Level: 53 inches

26/10/2016 12:51:00
Reading Date & Time

Details...▼

Device ID: Wms01, Sensor Name: Overhead Tank Sensor



Level: 35 inches

26/10/2016 12:51:00
Reading Date & Time

Details...▼

Call Now: +9221- 3452-3868 or Humayun Qureshi +92-0300-2468124 Email: info@datalog.pk

